



Steven Knight Training
Product Images and Databases

Jan 2004

Introduction	3
Preparations	3
The Process	4
Creating the Add a Photo form	4
Data Validation.....	8
Adding Photographs to Output	15
Page for full size picture	20
Linking to the fullsize image	24

Copyright Steven Knight Training Pty Ltd

No liability is accepted for any loss or damage arising from the use of this guide

Introduction

In this guide we will be adding product images to the search results in the Galaxie Auto Dealer web site.

I have prepared some dummy images to serve as full size and thumbnail versions for this purpose. These are GIF files, in actual use the vehicle images would be JPEGs.



We'll start by building the form to add the information about these images to the database.

Once we have that working, we'll add the images to the product detail page so that searchers can see them. Clicking on a thumbnail picture will display a full size version.

In this exercise we'll assume the images are uploaded to the web site using FTP. We will also assume the thumbnails and full size images are of set dimensions.

Preparations

- Galaxie Autodealer site exists
- Site Defined
- DSN and Connections created

The Process

Creating the Add a Photo form

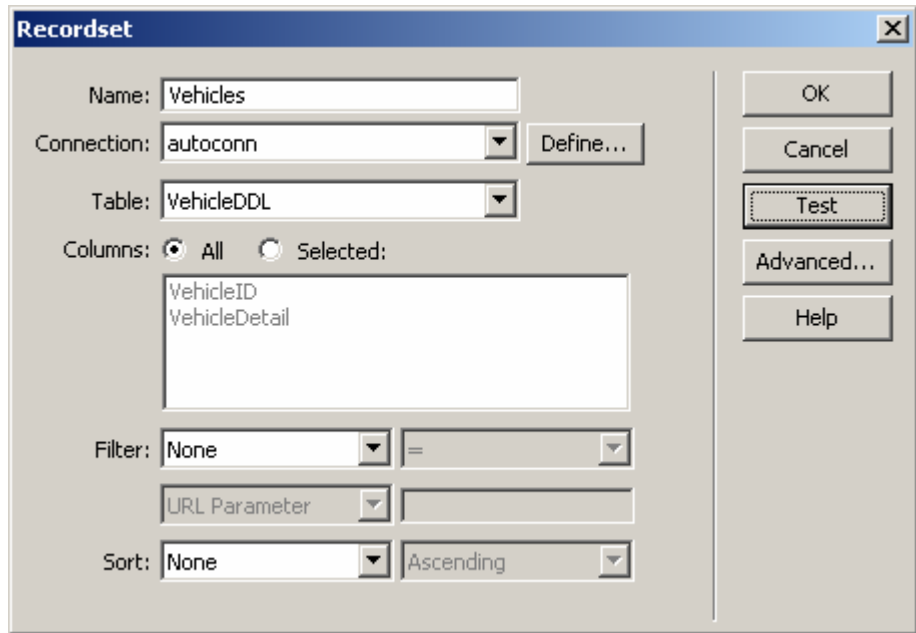
In Dreamweaver, create two pages

- **AddPhoto.asp**
- **PhotoAdded.asp**

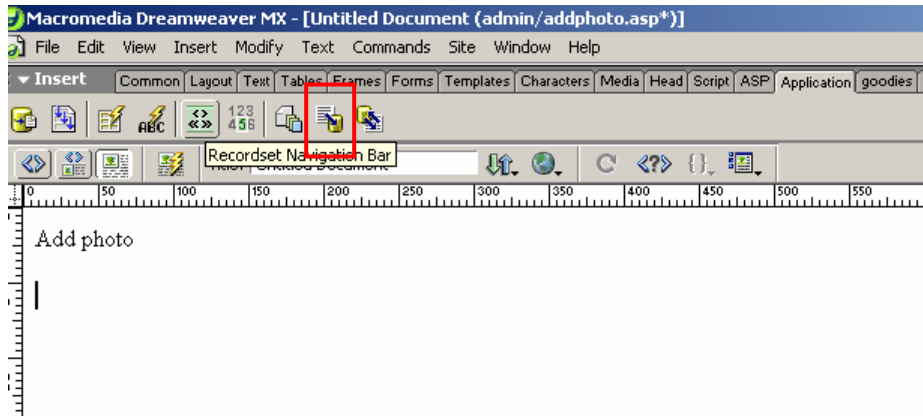
Navigate to **Addphoto.asp**

Create a Recordset based on the VehicleDDL query.

This will be used to populate a drop down list.



On the Insert bar, click on the Application tab



The dialog shown opposite appears.

Record Insertion Form

Connection:

Insert Into Table:

After Inserting, Go To:

Form Fields:

Column	Label	Display As	Submit As
photoID	PhotoID:	Text Field	Numeric
vehicleID	VehicleID:	Text Field	Numeric
thumbnail	Thumbnail:	Text Field	Text
fullsize	Fullsize:	Text Field	Text
Caption	Caption:	Text Field	Text

Label:

Display As: Submit As:

Default Value:

PhotoID is
autonumber field.
We don't want users
to type it in because
the database will
create it
automatically.
Select the field as
shown and press the
delete key

Record Insertion Form

Connection:

Insert Into Table:

After Inserting, Go To:

Form Fields:

Column	Label	Display As	Submit As
photoID	PhotoID:	Text Field	Numeric
vehicleID	VehicleID:	Text Field	Numeric
thumbnail	Thumbnail:	Text Field	Text
fullsize	Fullsize:	Text Field	Text
Caption	Caption:	Text Field	Text

Label:

Display As: Submit As:

Default Value: